

WORKSOUT

INTRODUCTION

- A. UNIVERSITY OF OREGON
- B. WOMEN'S CARE USA
- C. 삼성 SDS
 - 1. 인도 AFC
 - 2. 두바이 HEALTHCARE
 - 3. 쿠웨이트 KUWAIT OIL COMPANY
- D. WORKSOUT 의 IT팀장 최용환



ALWAYS ON THE LOOKOUT FOR INTERESTING

ESTABLISHED IN 2003, WORKSOUT HAS DISTRIBUTED CLOTHING BRANDS FROM OVERSEAS AND HAS BUILT UP A RESPECTED IMAGE WITHIN THIS NICHE. ALWAYS ON THE LOOKOUT FOR INTERESTING, AUTHENTIC AND UNIQUE CLOTHING AND ACCESSORIES THEY HAVE FOUND CARHARTT WIP, BRIXTON, DEUS EX MACHINA AND OBEY FOR THEIR CURRENT RETAIL AND DISTRIBUTION.

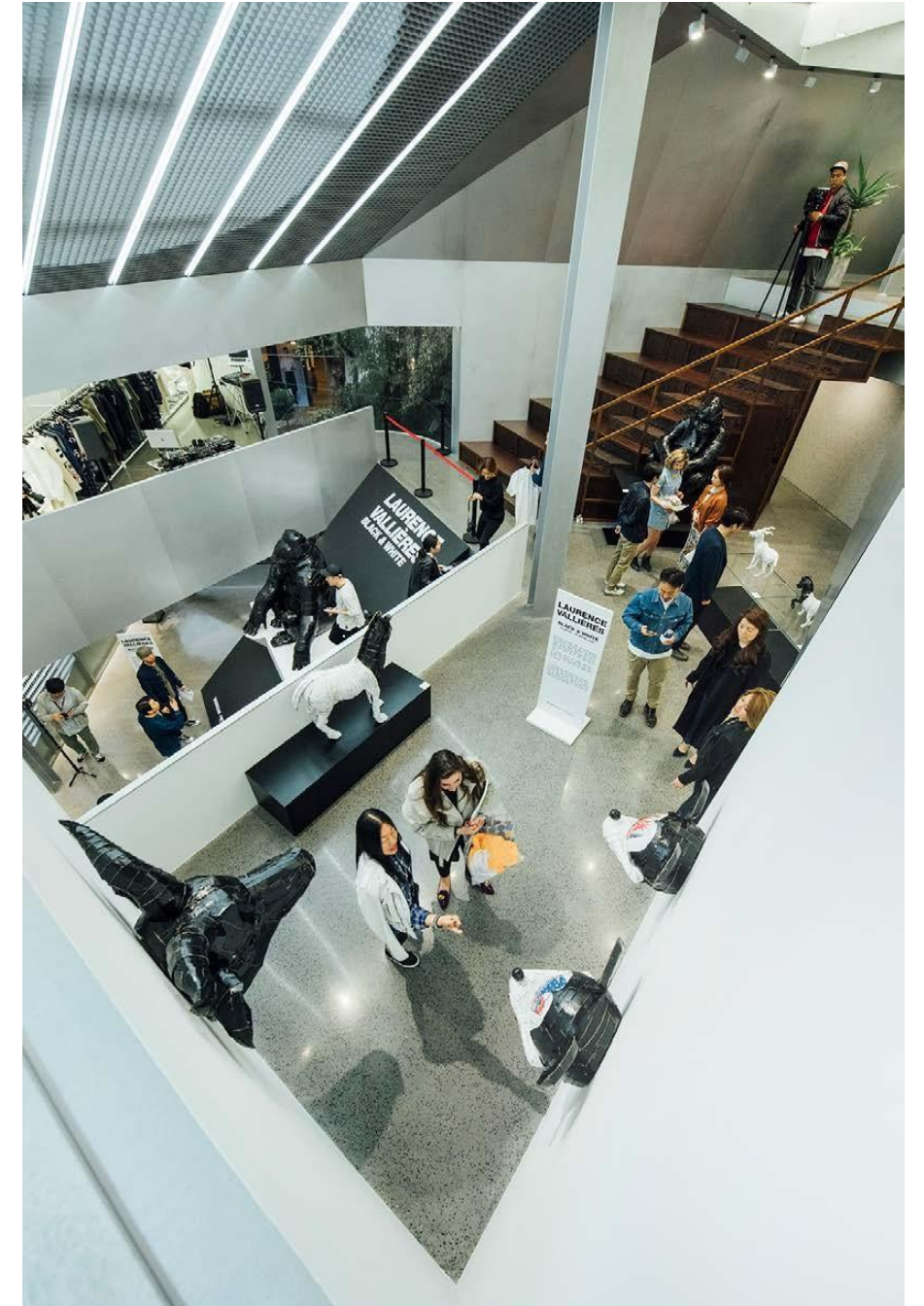
WITH THESE BRANDS WORKSOUT SELECT STORES STARTED TO GROW – NOT ONLY ECONOMICALLY, BUT ALSO IN THEIR PERSONALITY. ON THESE DEVELOPMENTS THEIR IDENTITY IS BASED TODAY.

WORKSOUT

ABOUT



FOR WORKSOUT MUSIC, CULTURE, ARTISTS, ENTERTAINERS AND THE CREATIVE PEOPLE AROUND THEM ARE ALWAYS AN INSPIRATION AND HELPS THEM TO ADAPT NEW BRANDS SUCCESSFULLY TO THE KOREAN MARKET.



ABOUT

2003 08	WORKSOUT ONLINE STORE OPEN STUSSY, RVCA, RECON, MILCK- RATE ATHLETICS ACCOUNTS	2012 02	CONVERTED TO CORPORATION, WORKSOUT INC.		OPEN IN LOTTE DEPARTMENT STORE, SEOMYUN, BUSAN		CARHARTT WIP SHOP IN SHOPS OPEN IN SHINSEGAE DEPART- MENT STORE, GANGNAM, SEOUL
2005 01	WORKSOUT 1ST OFFLINE STORE OPEN IN APGUJEONG, SEOUL		CARHARTT WIP 1ST SHOP IN S HOPS OPEN IN SHINSEGAE DE- PARTMENT STORE, CENTUMCITY, BUSAN	2013 09	CARHARTT WIP 2ND FLAGSHIP STORE OPEN IN HONGDAE, SEOUL	2015 10	WORKSOUT WEBSITE & ONLINE STORE RENEWAL
2008	BRIXTON DISTRIBUTION	2012 09	CARHARTT WIP SHOP IN SHOPS OPEN IN LOTTE DEPARTMENT S TORE, MYOUNG-DONG	2013 12	RELOCATED WAREHOUSE IN GO NJIAM, GYEONGGI-DO	2015 11	WORKSOUT FLAGSHIP STORE EX PANSION AND RENOVATION IN A PGUJEONG, SEOUL
2009	CARHARTT WIP DISTRIBUTION					2016	PATTA, BRAIN DEAD EXCLUSIVE DEALER
2009 08	WORKSOUT OFFLINE STORE EX- PANSION AND RENOVATION IN A PGUJEONG, SEOUL	2012 12	CARHARTT WIP SHOP IN SHOPS OPEN IN LOTTE DEPARTMENT S TORE, CHANGWON	2014 02	MOVE WORKSOUT HEADQUAR- TER OFFICE TO SEOGYO-DONG, SEOUL	2016 03	CARHARTT WIP SHOP IN SHOPS MOVED AND RENOVATED IN SHIN SEGAE DEPARTMENT STORE, CEN TUMCITY, BUSAN
2010 01	CARHARTT WIP 1ST FLAGSHIP S TORE OPEN IN APGUJEONG, SEO UL	2013 02	MANAGED LOGISTIC TEAM AND RENT WAREHOUSE IN YEOK- SA M-DONG, SEOUL	2014 10	CARHARTT WIP SHOP IN SHOPS OPEN IN TIMESQUARE, SEOUL		
2012 01	ESTABLISH WORKSOUT HEAD- Q UATER OFFICE IN ITAEWON, SEOU L		CARHARTT-WIP SHOP IN SHOPS OPEN IN HYUNDAI DEPARTMENT STORE, MOK-DONG, SEOUL	2014 12	RELOCATED WAREHOUSE IN GIM- PO, GYEONGGI-DO		WORKSOUT 1ST SHOP IN SHOPS OPEN IN SHINSEGAE DEPART- M ENT STORE, CENTUMCITY, BUSAN
2012	OBEY DISTRIBUTION	2013 08	CARHARTT WIP SHOP IN SHOPS	2015	DEUS EX MACHINA, NIXON, GOOD WORTH & CO., SATTADISTRIBUTION	2016 07	CARHARTT WIP SHOP IN SHOPS OPEN IN COEX MALL, SEOUL

HISTORY

BRANDS

Sasquatchfabrix.
Sense of Freshness. High Performance Vandalism.



Hombre Niño

HUMAN MADE



Folk



CANADA GOOSE®

White Mountaineering®

Richardson

POST-IMPERIAL

FILLING PIECES



Parra



RIPNDIP

PAM

Patta



Gloverall

blackeyepatch



VANS®



CONVERSE

DISTRIBUTION

carhartt®
WORK IN PROGRESS

Brixton

OBEY®

XLARGE®

NIXON

LEXDRAY

COU.AGE
GOOD OLD DAYS

GoodWorth™

SATTA

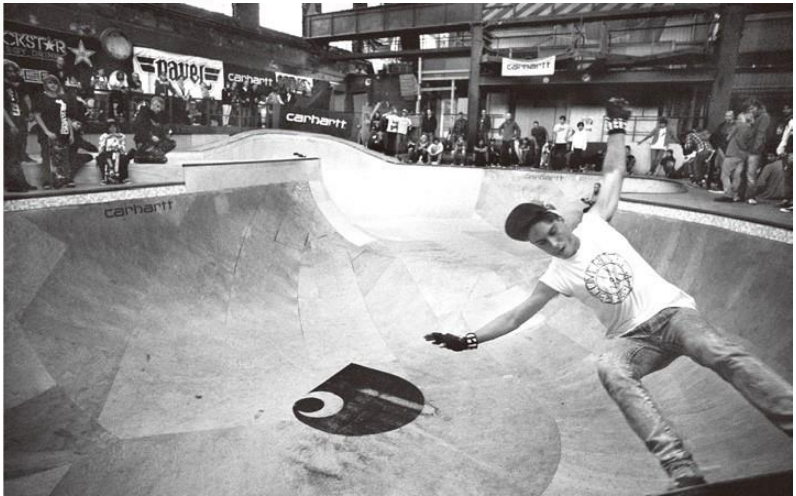
Deus Ex Machina®

BRANDS

CARHARTT WIP



carhartt[®]
WORK IN PROGRESS



CARHARTT WIP

CARHARTT WIP



carhartt[®]
 WORK IN PROGRESS



CARHARTT WIP

CARHARTT WIP



CARHARTT WIP

WORKSOUT SEOUL APGUJEONG

SIZE:

1F-3F / 600 Square meters

OPENING DATE:

November 2015

BRANDS:

BlackEyePatch | Bluey | Black Rabbit | Brain Dead | Brixton | Canada Goose | Carhartt WIP | Cav Empt | Champion Japan | Converse | Courage | Deus Ex Machina | Eastlogue | Explorer's Press | FDMTL | Filling Pieces | Folk | Gloverall | GoodWorth&Co. | Heritage Floss | Hombre Niño | Human Made | Island Slipper | Lexdray | Man Up Girl | Mischief | New Balance | Nixon | Obey | P.A.M. | Octagon | Parra | Patta | Polar Skate Co. | Post Imperial | Pragmatic | Reigning Champ | Richardson | Ripndip | Rocky Mountain Featherbed | Sasquatchfabrix | Satta | Saturdays Surf NYC | Stone Island | The H.W.Dog & Co. | Vanquish X Fragment Design | Vans | White Mountaineering | X-Large



STORES

WORKSOUT SEOUL HONGDAE WOWSAN

SIZE:

3F-4F / 158 Square meters

OPENING DATE:

September 2013

BRANDS:

Brixton | Champion Japan | Converse |
Cour. age | Deus Ex Machina | Explorer's
Press | Good Worth & Co. | Lexdray | M
ischief | Nixon | Obey | Öctagon | Par-
ra | Patta | Polar Skate Co. | Richardson | Ri
pndip | Satta | The H.W.Dog & Co. | Van
s

HOURS:

Mon - Sun | 12:00PM - 9:00PM

PHONE:

+82-2-337-8333

ADDRESS:

52, Wausan-ro, Mapo-gu, Seoul, South
Korea



STORES

WORKSOUT BUSAN CENTUM CITY

SIZE:

80 Square meters

OPENING DATE:

March 2016

BRANDS:

Brixton | Cour. age | Deus Ex Machina |
Good Worth & Co. | Island Slipper | Lex-
dray | Mischief | Nixon | Obey | Satta

HOURS:

Mon - Sun | 10:30AM - 10:00PM

PHONE:

+82-51-745-1531

ADDRESS:

2F, Centum City Mall, 15, Centum 4-ro,
Haeundae-gu, Busan, South Korea



STORES



STORES

CARHARTT WIP STORE SEOUL APGUJEONG

SIZE:
165 Squaremeters

HOURS:
Mon - Sun | 12:00PM - 9:00PM

OPENING DATE:
March 2011

PHONE:
+82-2-541-0870

ADDRESS:
21, Apgujeong-ro 54-gil, Gangnam-gu, Seoul, Korea

CARHARTT WIP STORE SEOUL HONGDAE WOWSAN

SIZE:
158 Squaremeters

HOURS:
Mon - Sun | 12:00PM - 9:00PM

OPENING DATE:
September 2013

PHONE:
+82-2-337-8333

ADDRESS:
52, Wausan-ro, Mapo-gu, Seoul, Korea

13



14



STORES

CARHARTT WIP STORE SEOUL TIMES SQUARE

SIZE:
110 Squaremeters

HOURS:
Mon - Sun | 10:30AM - 10:00PM

OPENING DATE:
September 2014

PHONE:
+82-2-2638-2701

ADDRESS:
3F, 15, Yeongjung-ro, Yeongdeungpo-gu, Seoul, Korea

CARHARTT WIP STORE SEOUL NOON SQUARE

SIZE:
50 Squaremeters

HOURS:
Mon - Sun | 10:30AM - 10:00PM

OPENING DATE:
October 2016

PHONE:
+82-2-3783-5225

ADDRESS:
4F, 14, Myeongdong-gil, Jung-gu, Seoul, Korea

14



15



CARHARTT WIP STORE SEOUL GANGNAM

SIZE:
62 Squaremeters

HOURS:
Mon - Sun | 10:30AM - 10:00PM

OPENING DATE:
September 2015

PHONE:
+82-2-3479-1246

ADDRESS:
B1, 176, Sinbanpo-ro, Seocho-gu, Seoul, Korea

CARHARTT WIP STORE SEOUL COEX MALL

SIZE:
115 Squaremeters

HOURS:
Mon - Sun | 10:30AM - 10:00PM

OPENING DATE:
July 2016

PHONE:
+82-2-551-5512

ADDRESS:
513, Yeongdong-daero, Gangnam-gu, Seoul, Korea

15



16



CARHARTT WIP STORE BUSAN CENTUM CITY MALL

SIZE:
70 Squaremeters

HOURS:
Mon - Sun | 10:30AM - 10:00PM

OPENING DATE:
March 2016

PHONE:
+82-51-745-2961

ADDRESS:
2F, Centum City Mall, 15, Centum 4-ro, Haeundae-gu, Busan, South Korea

CARHARTT WIP STORE DAEGU SHINSEGAE

SIZE:
59 Squaremeters

HOURS:
Mon - Thurs | 10:30AM - 8:00PM, Fri - Sun | 10:30AM - 9:00PM

OPENING DATE:
December 2016

PHONE:
+82-53-661-6593

ADDRESS:
6F, Shinsegae Daegu, 149, Dongbu-ro, Dong-gu, Daegu, Republic of Korea

16

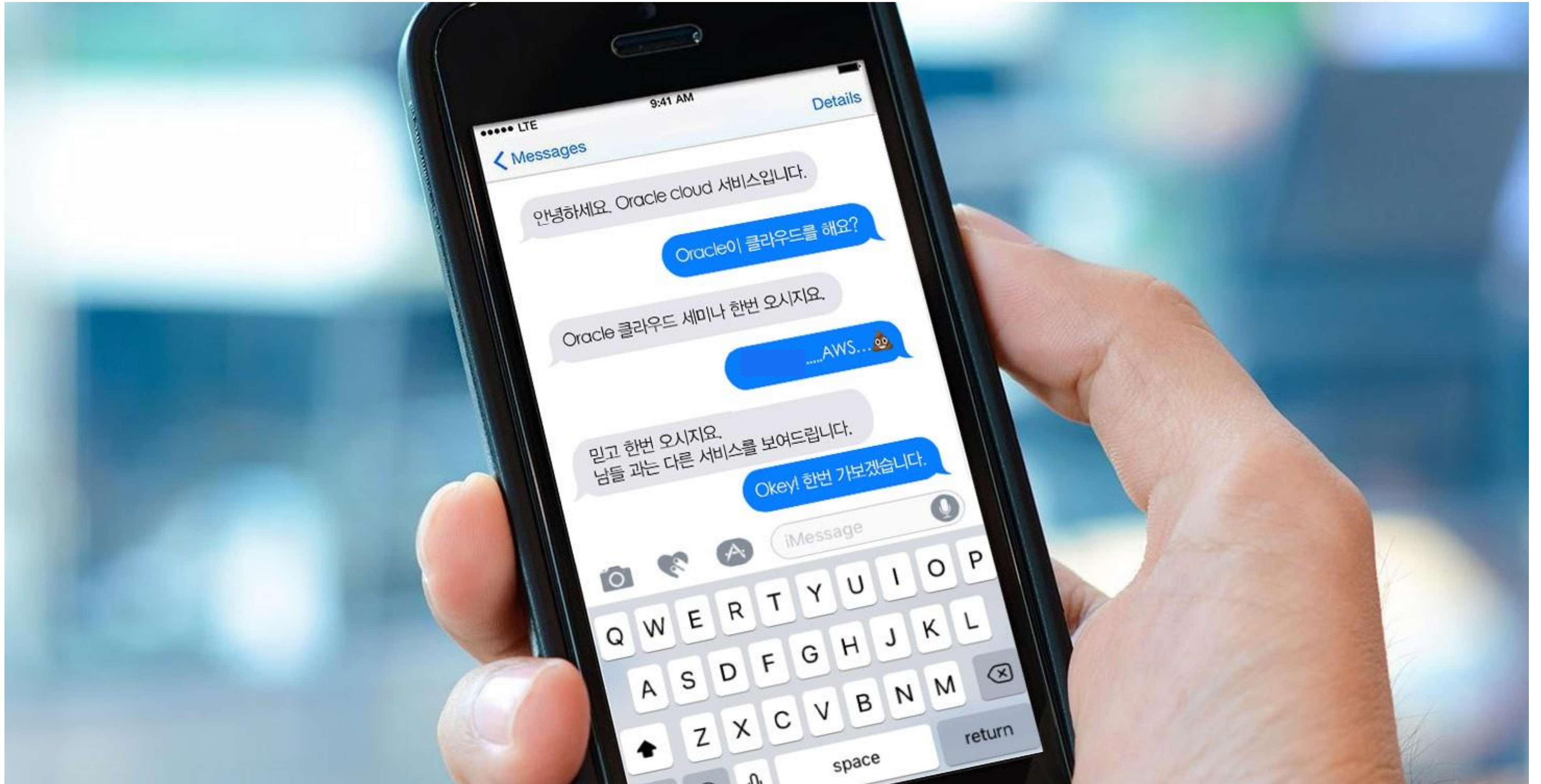


17



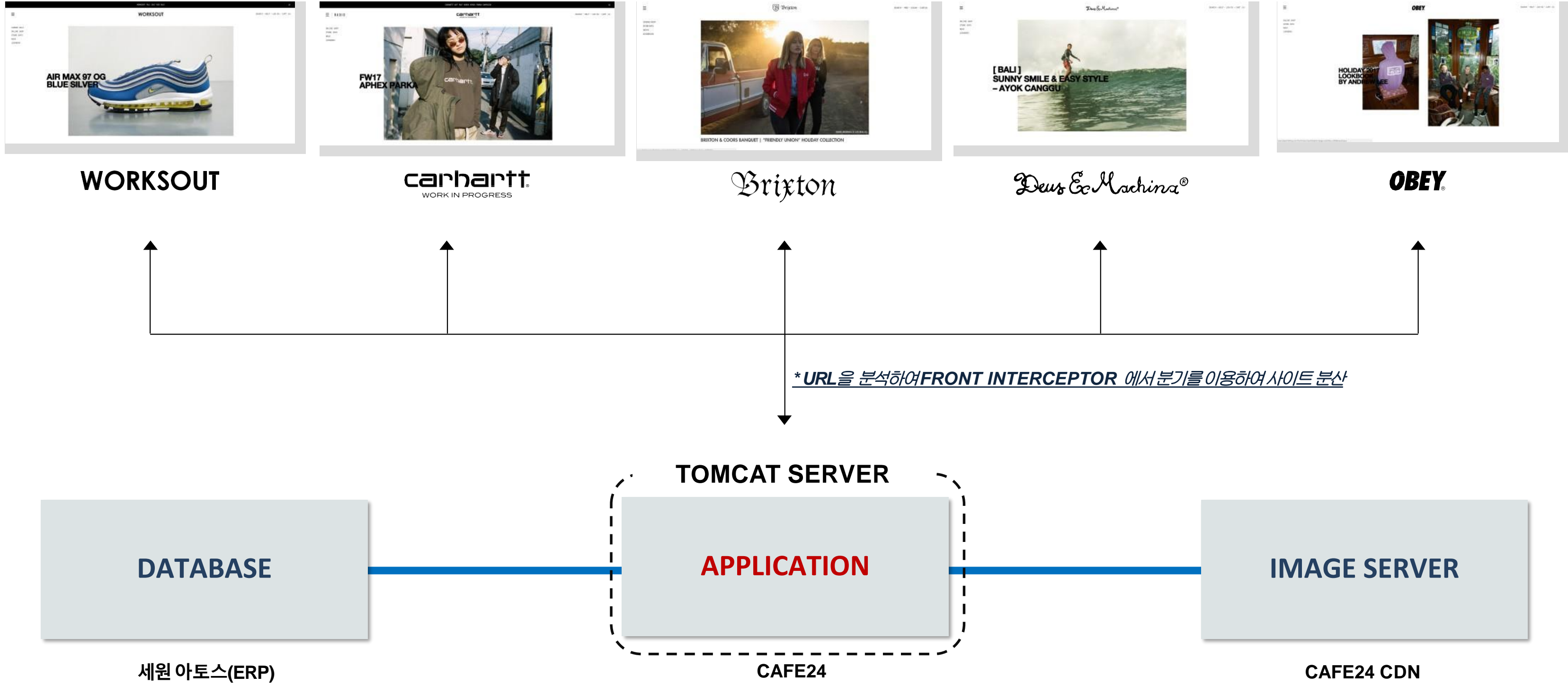
STORES

ORACLE의 연락



ORACLE

AS_IS OVERVIEW



AS_IS OVERVIEW

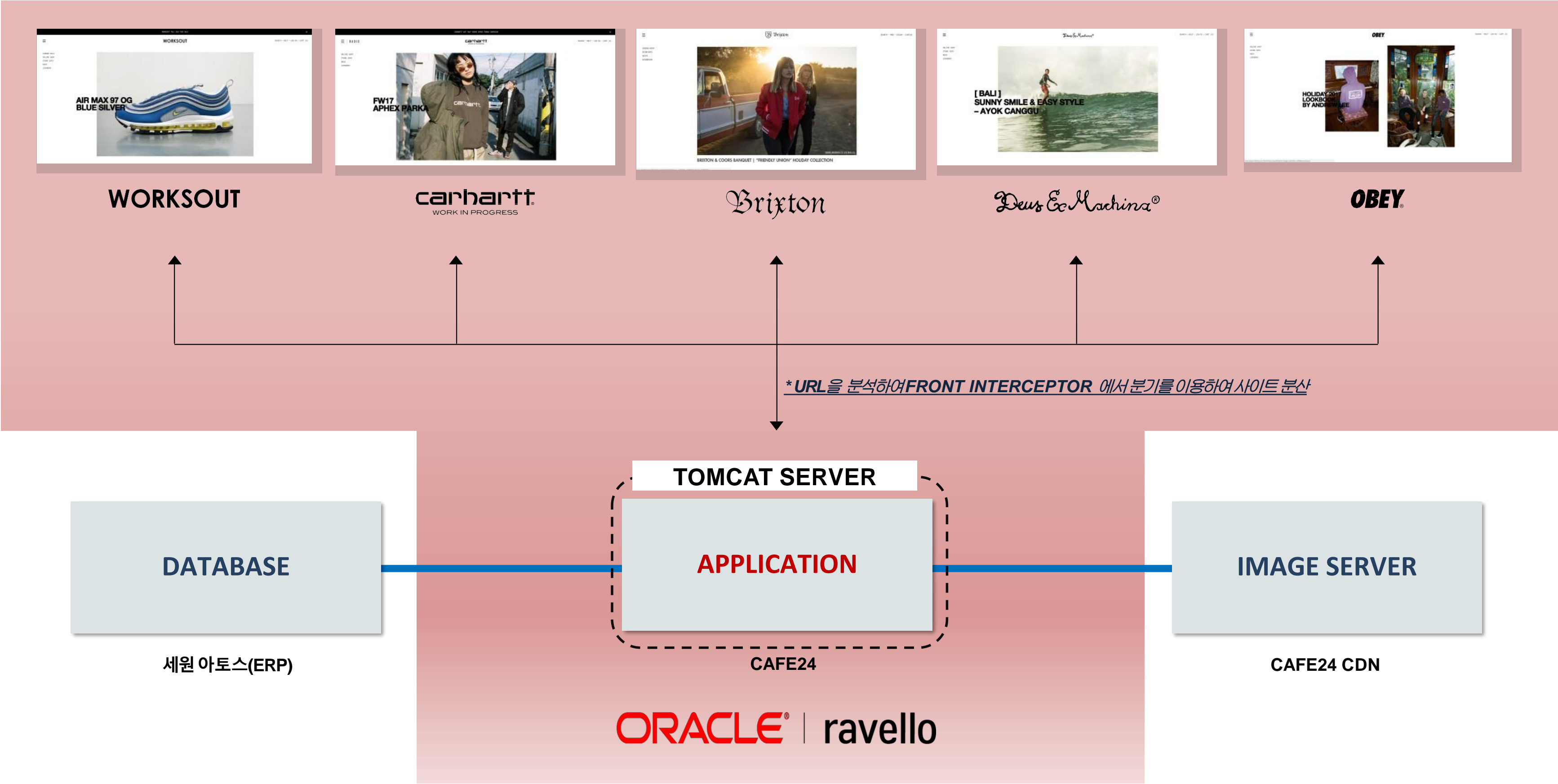
AS-IS 문제점

1. 서버의 과부하
2. SEASON OFF에 대응을 할 수 없다
3. DR 구성
4. 사이트별 독자 컨트롤 불가능



PROBLEMS

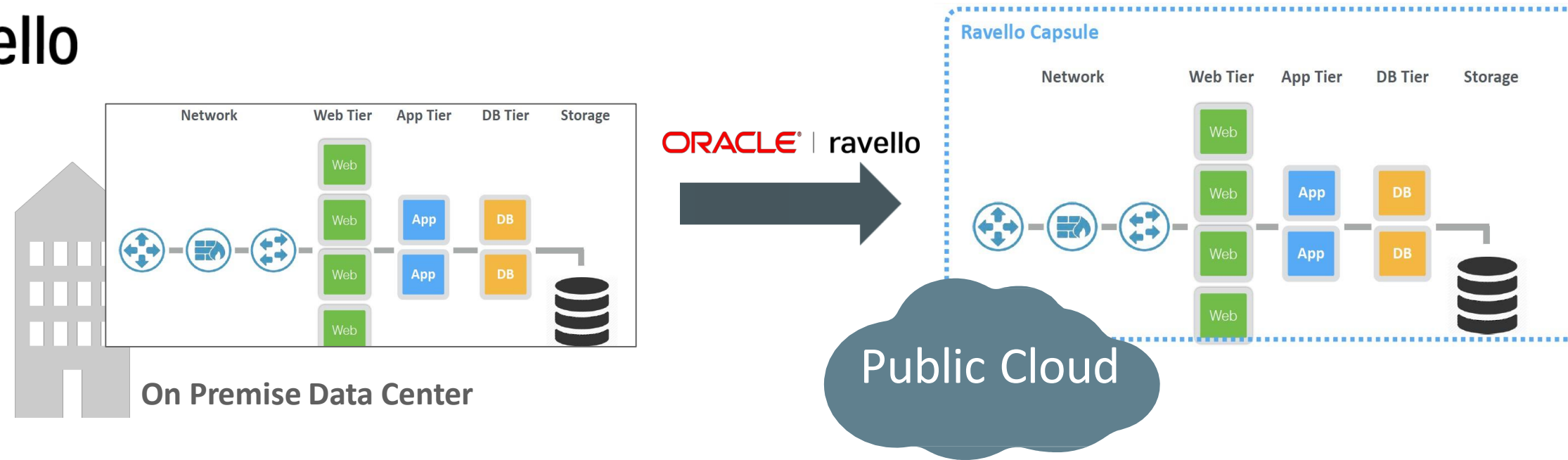
TO_BE 서버구성



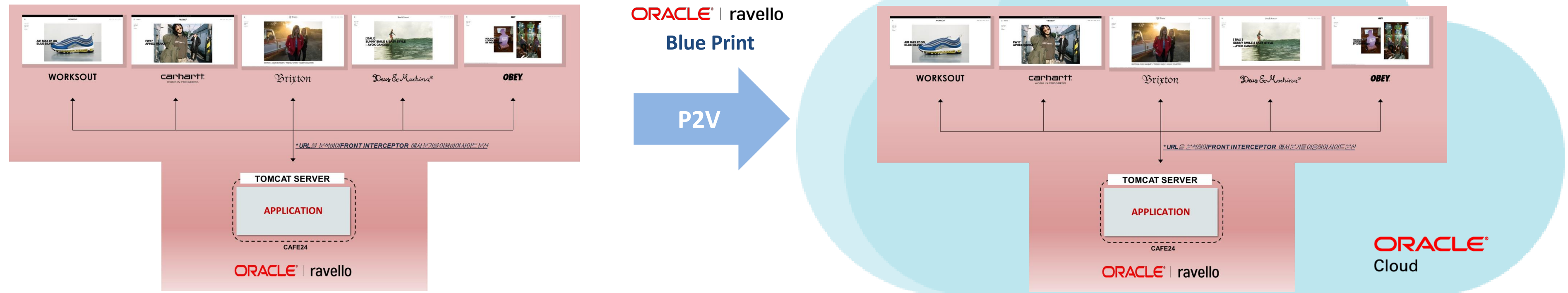
AS_IS OVERVIEW

TO_BE 서버구성

ORACLE | ravello



*Workout 적용 현황



TO_BE 서버구성

ravello systems Training Platform Ravello Repo Help & Support 용환 최

Applications > workout Settings VMs Canvas Network Log Data is saved.

+ Actions Save as Blueprint Update Search 1 VM

Published in: Seoul Stopped Cloud Errors

1 Recent App Library Admin Learn

linux6u9

iup iup iup iup iup

나는 무엇?!! 혼자서 외롭다~

+ - ↶ ↷ ↻

TO_BE 서버구성

The screenshot displays the Ravello Systems management console. The main area shows a grid of server configurations. A large blue callout bubble at the top points to the top-left configuration, labeled "CI server, Nginx Load balancer". Another large blue callout bubble on the right points to a group of configurations, labeled "실제 Application servers". A third blue callout bubble points to a specific configuration labeled "test", labeled "Test server". A fourth blue callout bubble at the bottom points to a configuration labeled "workout...", labeled "WORKSOUT GLOBAL". The interface includes a top navigation bar with "Training Platform", "Ravello Repo", "Help & Support", and a user profile. A left sidebar contains "Applications", "2 Recent Apps", "Library", and "Admin". The main grid has buttons for "Actions", "Save as Blueprint", "Update", and "Search". The bottom right corner has a "Data is saved." notification and a "Cloud Errors" indicator.

CI server, Nginx Load balancer

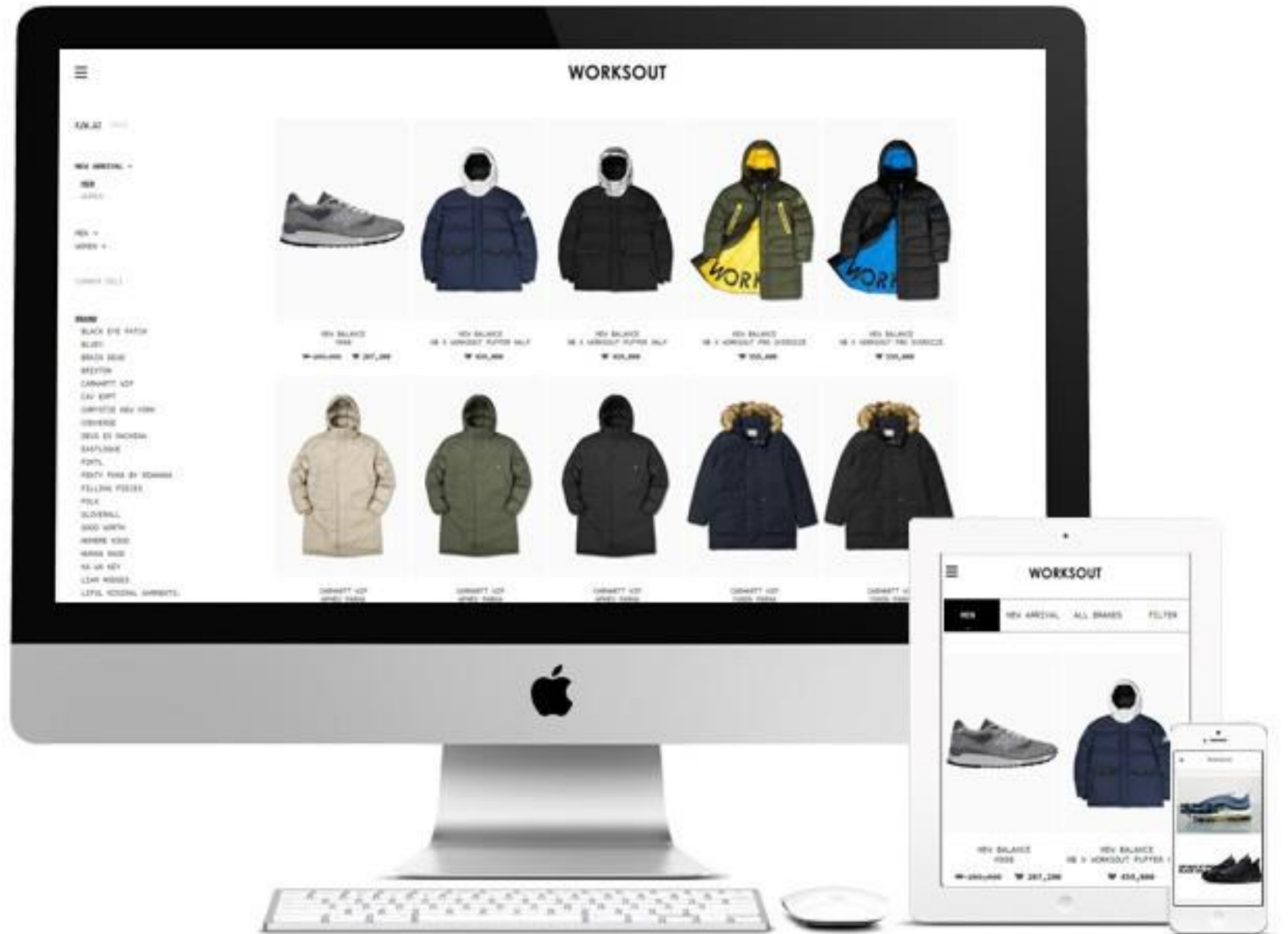
실제 Application servers

Test server

WORKSOUT GLOBAL

TO_BE 서버 이전 문제점

1. 시간
2. 비용
3. 안정화



TO_BE PROBLEMS

DREAM OF WORKSOUT



GOAL

TO BE OR NOT TO BE



GOAL

Q & A

Q&A

A large, textured blue cube is the central focus of the image, set against a dark, almost black background. The cube's surface has a fine, grid-like texture, giving it a three-dimensional, crystalline appearance. The lighting is dramatic, highlighting the edges and corners of the cube, which creates a sense of depth and volume. The overall composition is minimalist and geometric.

WORKSOUT

WORKSOUT INC., 59 JANDARI-RO, MAPO-GU, SEOUL, SOUTH KOREA 04034

T. +82-2-541-0854 | E. yiyang@worksout.co.kr | www.worksout.co.kr